



DARKROOM ACCESSORIES 2014



LIFT

Art. Nr. 4072

Macht ständiges An- und Abkuppeln der Tanks und Drums überflüssig.



Eingießen bei rotierender Trommel, Entleeren durch Betätigen eines Hebels. Für die Praxis bedeutet das: Keine nassen Hände mehr, spürbare Entlastung, exaktes Einhalten der Verarbeitungszeiten sowie schnelle und gleichmäßige Benetzung auch großer Papiere und Filme. Leichtes Auffangen der Chemikalien zur Wiederverwendung.

Alle vorhandenen Tanks können weiter benutzt werden, wenn in den Deckel der Zahnkranz (Art. Nr. 1505) eingedrückt wird.

35MM TANK

Art. Nr. 1510

For processing 1 roll of 35mm film.



Inversion tank for handling all types of 35mm film (size 135). Can be upgraded to a rotary tank by attaching cap for pressure compensation. Made with durable plastic.

Filling quantity:

Hand inversion 170ml

Rotary processing 140ml

Includes:

1 Reel #1501

UNI TANK

Art. Nr. 1520

For processing 2 rolls of 35mm film or rollfilm.



Inversion tank for handling all types of roll-rollfilm and 35mm film. Can be upgraded to a rotary tank by attaching a magnet (#1504) or a cog (#1505). Membrane cap for pressure compensation. Made with durable plastic.

Filling quantity:

Hand inversion 270ml

Rotary processing 170ml

Includes:

1 Reel #1501

TANK MODULE

Art. Nr. 1530

For all 1500 series tanks. Each module increases the capacity of the tank by 3 additional rolls of 35mm film or two 120 rollfilms.



The tank module expands the capacity of all 1500 series tanks. The module is put between the tank and the lid and includes a center core extension.

Filling quantity:

Hand inversion 700ml

Rotary processing 330ml

MULTI TANK

Art. Nr. 1540

For processing up to 4 rolls of 35mm film or rollfilm.



Inversion tank for handling all types of roll-rollfilm and 35mm film. Can be upgraded to a rotary tank by attaching a magnet (#1504) or a cog (#1505) to be used with JOBO lift. Membrane cap for pressure compensation. Made with durable plastic.

Filling quantity:

Hand inversion 470ml

Rotary processing 240ml

Includes:

1 Reel #1501

DUO-SET REEL

Art. Nr. 1501

For processing 35mm films and rollfilms.

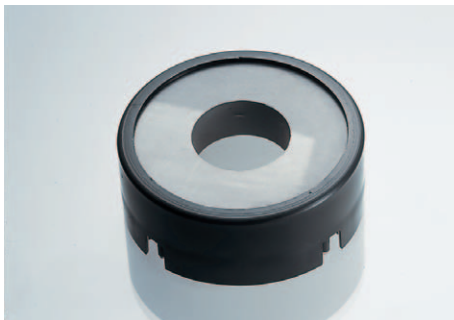


Fits all Tanks of the 1500 system. The reel can be adjusted for either film size and films can be loaded simply without using a loader. The red clip allows loading of two rollfilms end to end with no chance of overlapping. Made with durable plastic that is flexible. Suitable for professional use.

MAGNET

Art. Nr. 1504

Allows use of all tanks and drums on processors without a JOBBO lift (magnet drive).



The magnet upgrades all inversion tanks to rotary tanks. All tanks and drums (except the 3000 system and Expert) have holding pins on the bottom to which the magnet is attached.

COG LID

Art. Nr. 1503



With a separate 1503 cog lid, you can keep the original inversion lid that came with your tank instead of converting it with a 1505 cog. This allows you to use your tank for inversion with the original lid or as a rotary tank with the 1503 cog lid.

Fits all 1500 series tanks.

COG

Art. Nr. 1505

For upgrading tanks and drums for operation with the JOBBO lift.



The cog is pushed into the original lid of the tank/drum and can be used on all processors equipped with a JOBBO Lift /except ATL 1500).

ROLLER BASE

Art. Nr. 1509



The roller 1509 can be used for all tanks and drums when purchase of a processor is not possible.

MULTI TANK 1

Art. Nr. 2540

Rotary tank for processing 1 roll of 35mm film.



Smallest tank of the 2500 system. Can be used by professionals for processing of test strips. Holds one #2502 reel.

Filling quantity: 140ml
Includes no reels

MULTI TANK 2

Art. Nr. 2520

Rotary tank for processing 2 rolls of 35mm film, 2 rolls of 120m rollfilm or 6 sheets of 5x4".



Smallest tank for processing sheet films up to 4x5" with sheet film reel #2509n. Holds two #2502 reels or one #2509n reel.

Filling quantity: 270ml
Includes no reels

MULTI TANK 5

Art. Nr. 2550

Rotary tank for processing 5 rolls of 35mm film, 6 rolls of 120m rollfilm or 12 sheets of 5x4".



Tank for processing sheet films up to 4x5". Holds five #2502 reels or two #2509n sheet film reels.

Filling quantity: 640ml
Includes no reels

DUO-SET REEL

Art. Nr. 2502

For processing 35mm films and rollfilms.

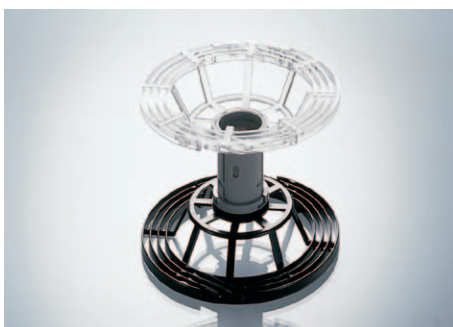


Fits all tanks of the 2500 system. The reel can be adjusted for either film size and films can be loaded simply without using a loader. The red clip allows loading of two 120 rollfilms end to end with no chance of overlapping. Made with durable plastic that is flexible. The JOB0 Duo-Set is designed for professional use.

SHEET FILM SET UNI

Art. Nr. 2509n

For processing of sheet films.



Fits all tanks (except 2513) in the 2500 system. The reel can be adjusted for various film sizes and film can be loaded with or without loader. The reel is designed for professional use and holds up to six sheet films of size 6x9 / 9x12 / 4x5".

JOB0 DRUM EXPERT 5

Art. Nr. 3005

Sheet film tank for use with a CPA-2 or CPP-2 with lift or CPP-3 with lift or a JOB0 Autolab (except ATL 1500).



The Expert Drum system is a professional tank system for the finest quality processing of sheet films.

Films from 20x25cm up to 21x30cm can be handled. Provides consistent processing while using only a minimum amount of chemistry.

#3005 - up to 5 sheets 20x25cm / 8x10"

The foot pump #3360 is a necessary accessory fo easy opening of the 3000 drum system.

JOB0 DRUM EXPERT 6 & 10

Art. Nr. 3006 & 3010

Sheet film tank requiring use with a CPA-2 or CPP-2 with lift or CPP-3 with lift or a JOB0 Autolab.



Professional tank system for the finest quality processing of sheet films.

Films from 9x12cm up to 13x18cm can be handled. Provides consistent processing while using only a minimum amount of chemistry.

#3006 - up to 6 sheets 13x18cm / 5x7'

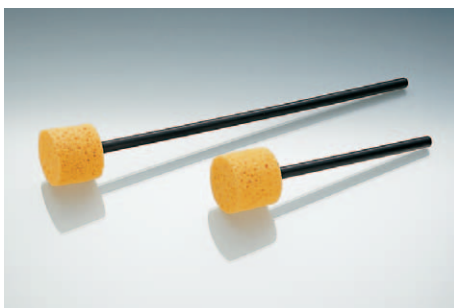
#3010 - up to 10 sheets 9x12cm / 4x5'

The foot pump #3360 is a necessary accessory fo easy opening of the 3000 drum system.

EXPERT DRYING ROD

Art. Nr. 3007 & 3008

For drying of the internal tubes of the Expert drums.



The Expert Drums come with drying rods which should be changed every 12 months to prevent damage of the tubes of the tanks.

#3007 for Expert 3006/3010

#3008 for Expert 3004/3005

CASCADE FILM WASHER

Art. Nr. 3350

For archivally washing films in the tank.



Allows full archival washing with minimum water flow. Reduces required washing time to 3 minutes. A universal adapter allows connection to most taps and a unique system allows you to set the water flow to an optimal rate.

FOOT PUMP

Art. Nr. 3360

For all Expert and 3000 series drums.



Unlike the other JOB0 system tanks and drums that use a sliding ring closure, the Expert and 3000 series drums have a friction-fit lid. This lid can sometimes be difficult to open by hand but pops off easily if slight air pressure is built up in the drum. To open the drum lid of any 3000 series drum fast and easily, we recommend to use the foot pump #3360.

SKALED BOTTLES

Art. Nr. 3372 & 3373

Chemical bottles

For mixing and storage of chemicals.



Quality scaled storage bottles. Available in black or white. Measuring grades display the remaining quantity of chemistry in 100ml increments.

#3372 scaled bottle 1000ml black
#3373 scaled bottle 1000ml white

LIGHT TRAPPING FUNNEL

Art. Nr. 03042



Spare funnel, for film tank system 1500 and 2500.

PUSH-ON-CAP

Art. Nr. 03046



Spare part, fits all lids of the JOB0 tanks and drums, except those fitted with a 1505 Cog drive adapter (system 1500, 2500, 2800).

CORE TUBES

Art. Nr. 04043/-44/-45



Spare part core tube.

#04043 for tank 1510
#04044 for tank 1520
#04045 for tank 1530
#04043+03045 for tank 1540

HOLDING CLAMP

Art. Nr. 92157



Spare part Holding Clamp for Lift #4072.

PLUG

Art. Nr. 92158



Spare part Plug for Coupling Flange for Lift #4072.

ROLLER BLOCK

Art. Nr. 95183



Spare part, fits to all JOB0 lifts.

ROLLER

Art. Nr. 92215

Art. Nr. 93099



Spare part, fits to JOB0 roller block #95183.

Art. Nr. 92215 Roller with extention

Art. Nr. 93099 Roller

LIFT HANDLE ASSEMBLY

Art. Nr. 95186



In case of breaking of the lift handle due to heavy use (can be simply exchanged by loosening one crew).

PROCESSOR CLEAN

Art. Nr. 4181

For cleaning and removing stains and calcium build-up in processors.



The JOB0 Processor Clean removes deposits from the heating elements and residues of the color developer. Biodegradable. Regular use of this cleaner (every 2-3 weeks on the ATL) protects the heating elements as well as the pumps of the processors. Chlorine free, avoids corrosion of material. Also ideal for cleaning graduates and bottles.

Klaus-D. Seynsche Fotolaborservice
Feldstr. 41
51702 Bergneustadt
Germany

JOB RESERVES THE RIGHT TO TO MAKE MODIFI-
CATIONS TO PRODUCTS WITHOUT PRIOR NOTICE.

